

The Bell

Tushingham, Macefen & Bradley Parish Magazine



FEBRUARY / MARCH
2022

Welcome

I hope that 2022 has started well for you – January certainly seems to have gone quickly, and it's been good to see some bright, seasonably cold days as we wait for Spring. The magazine is already showing signs of warming up, with details of events planned, opportunities and growth in the community. As ever, we also have a nod to the past with reports of misdemeanours-gone-by as well as local sporting victories – and more recently, of festivities that succeeded against the odds before Christmas. There is also an important update on the Solar Farm consultation from our Parish Chairman (see page 2).

Thank you to those who have contributed to this edition of *The Bell*. For the April/May issue, please send any articles, photographs or notices by 18th March.

Keep warm!

Juliet

01948 820343; juliethelen@yahoo.com

Local contacts

Parish Chairman, John Oakden

01948 663940 / 07989 220468; john.oakden@hotmail.co.uk

Parish Clerk, Mike McKenzie

07932 007165; mckenziemikeac@aol.com

Ward Councillor, Rachel Williams

01948 860627; rachel.williams@cheshirewestandchester.gov.uk

Eddisbury MP, Edward Timpson

01829 733243; edward.timpson.mp@parliament.uk

Local police, PCSO Jon Hurst

Calls to 101 (non-urgent); jonathan.hurst@cheshire.pnn.police.uk



Report It

To report any Council-related issues or to track progress, visit:

www.cheshirewestandchester.gov.uk/residents/contact-us/report-it/report-it.aspx

Alternatively, you can use the reporting App, and log a report in four simple steps:

- 1) Pinpoint the location on the map;
- 2) Take a photo of the fault;
- 3) Select a category and provide more information;
- 4) Submit.

What's Been Going On?

St Chad's Christmas Market – November 2021

What a difficult but amazing event! No electricity or heating due to the night before's storm, but in true rural stoicism we carried on. Stall holders volunteered to remain, Father Christmas insisted on attending, helpers and locals brought hot water for drinks and our remarkable bacon bap ladies froze outside but turned out fabulous hot food. Customers came with children eager to see Santa.

Obviously we ended early but as organiser I cannot thank everyone enough. We held the grand draw and took over £1300 for church funds. Generosity was abundant – bless you all.

Louise Mountford

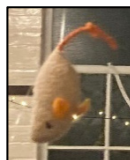


Bradley Chapel Panto – December 2021



The Bradley Chapel Panto was a great success. We had a good turnout and raised £300 for the Chapel which is amazing!

Called *The Bradley Jubilee Celebrations*, the panto was a take on 'The Vicar of Dibley'. We even had flying mice dropping from the rafters! There were readings from John and Harry Hollins, and we sang a number of carols. The raffle was very well received and we had some amazing donations from neighbours so the prizes were really super.



Cake, mince pies, mulled wine and cider were served afterwards in the barn which was decked out with fairy lights. Everyone loved it!

Alex Egan

Parish Chairman's Notes

Firstly, let me wish everyone in the Parish a wonderful new year and let us all hope the misery and uncertainty of the last two years is coming to an end. The virus has touched almost everybody (three of my children and innumerable friends have been infected) and the problems to organising ordinary life have been compounded by it. The meeting due on 10th January had to be postponed because of the rising number of cases of the new variant but we hope to have a rearranged date in the middle of February when we all can meet safely.

A new year and a new hope. Things go on in the Parish in the usual way with progress being slowed by lack of facilities and our position as the last outpost of the County Council. Negotiations are still ongoing with the Solar Farm proposal at Old St Chad's Chapel. I received this email from them on the 19th January 2022 after expecting them to send out the original literature to all those (over two thirds of the Parish) it had missed in their original proposal:

Reflecting the feedback received from the Parish Council in the meeting held on 24th November, Renewable Connections have subsequently explored how they can provide additional information to local people while also recognising the importance of minimising public gatherings considering the persistently higher number of cases of COVID-19. Given the cases of Omicron, Renewable Connections didn't feel it was appropriate to encourage people to gather in public places. Due to the submission timelines, Renewable Connections will therefore not formally be undertaking any further in-person public engagement before the application submission, which is due by the end of January.

Renewable Connections would be happy to share any additional information with the Parish including some updated visuals of the site from around the area to help residents appreciate the visual impact. These visuals and information will also be made available online, via our website and will contain the same information which would have been on the public boards we previously proposed. Given the local internet issues, if you would like any of this information to be distributed by post we would also be happy to arrange.

Renewable Connections would also like to offer another chance to engage with the Parish post-submission when the situation is more suitable and answer any further questions. The proposal will be open for input following planning submission via the Council website – we will update you when it has been submitted and share the reference with you as soon as we know it.

Given the general mood of the last meeting with them, I feel disappointed that they will go ahead with the application before we have given a final decision but I hope for a large attendance in February so that we can send them a clear message of our feelings.

John Oakden

Police Community Support



PCSO for Tattenhall and Malpas
PCSO Jonathan Hurst
jonathan.hurst@cheshire.pnn.police.uk



Beat Manager Rural South, **PC Steve Gardner**
stephen.gardner@cheshire.pnn.police.uk

Dial 999 in an emergency, 101 in a non-emergency

Dragon Hall Police Station, Whitchurch Road, Chowley, Tattenhall CH3 9DU

Tel: 101 (non-emergency); **Facebook:** Tattenhall & Malpas Police;

Twitter: @ThallMalpasPol; **Web:** cheshire.police.uk/a/your-area/cheshire/cheshire-west-and-chester/tattenhall-and-malpas/

Police surgeries at Malpas 2022

February: Sat 5th (10–12 am, Jubilee Hall); Sat 19th (2–3 pm: Old Fire Station Café)

March: Sat 5th (10–12 am, Jubilee Hall); Thurs 17th (3–4 pm: Old Fire Station Café)

How secure are your shed and garage?

Many people take great care when securing their homes but pay less attention to the security of their sheds and garages which are often used to store valuable property such as lawn mowers, power tools, bicycles and golf clubs. Ensure your shed is in good condition and would stand up to a security test.

- Use a closed shackle padlock not less than 2.5 inches in width, made of hardened steel with no less than five pins. A standard small padlock with hasp can easily be forced or cut by bolt cutters. Use the lock at all times.
- Protect glass by fitting a grille or strong wire mesh on the inside, and locks to any window that can be opened. Place curtains or other coverings over the window or blacken out with paint to prevent anyone seeing inside.
- Make sure that you can see your shed from the house. If it is obstructed from view a thief has a better chance of breaking in without being seen.
- Install a drive post on the outside of an up-and-over garage door. It will stop the door being opened and is a visible deterrent.
- Fitting a simple, low cost, battery operated alarm to the door of your shed or garage will warn of any attempted break in and act as a deterrent.
- Mark valuable items with Smart Water or Selecta DNA.



News from St Chad's

Happy Candlemas! As I write this the Candlemas Bells are beginning to bloom in my garden. Snowdrops are also known as Candlemas Bells because they bloom around the time of Candlemas. But what is Candlemas?

On February 2nd, exactly 40 days after Christmas, we commemorate the occasion when Mary, following Jewish law, brought the baby Jesus to the temple in Jerusalem. The Gospel reading for The Feast of the Presentation describes the scene: *“And when the time came for their purification according to the law of Moses, they brought him up to Jerusalem to present him to the Lord.”* The story continues as Simeon holds the baby in his arms and says that Jesus will be a light for the Gentiles (Luke 2:22-32).

In Christian communities around the world today, Candlemas continues to be a day of purification, renewal, and hope. It can be celebrated as a procession of light with the focus being on Simeon's words that Jesus would be a light. Some churches hold their Christingle service at Candlemas to celebrate Jesus as light of the world. In days gone by, Candlemas was a great celebration and candles were brought into church to be blessed. If you live your life without electric light then candles have a great importance in bringing light to dark evenings and dull days. For those Christians it was easy to imagine Christ as a light. A light to guide them through dark and dismal days.

In popular culture many traditions and sayings arose around the celebration of Candlemas. I am a lacemaker and some of my ancestors were Bedfordshire lacemakers living in 'Lace Villages'. The lacemakers celebrated Candlemas with a feast and such games as jumping over the candlestand. This led to the well-known nursery rhyme: *“Jack be nimble, Jack be quick, Jack jump over the candlestick.”*

The picture shows a Lacemakers Candlestand. The candle in the centre is surrounded by glass globes. The glass globes are filled with water. When the candle is lit the glass globes magnify the light enabling several lacemakers to share the light from one candle. This reminded me of the words of Jesus from Matthew's gospel chapter 5: 14-16

“You are the light of the world. A town built on a hill cannot be hidden. Neither do people light a lamp and put it under a bowl. Instead they put it on its stand, and it gives light to everyone in the house. In the same way, let your light shine before others, that they may see your good deeds and glorify your Father in heaven.” →



Services at St Chad's in February and March

| | | |
|----------------------|----------------|--|
| Sunday 6 February | 4.30 pm | Compline and reflection |
| Sunday 13 February | 9.00 am | Holy Communion |
| Sunday 20 February | 9.00 am | Morning worship |
| Sunday 27 February | 11.00 am | Service of the Word |
| Wednesday 2 March | 7.00 pm | United Benefice service for Ash Wednesday at St Chad's |
| Sunday 6 March | 11.00 am | United Benefice Holy Communion with Bishop Mark at Whitewell |
| Sunday 13 March | 9.00 am | Holy Communion |
| Sunday 20 March | 9.00 am | Service of the Word |
| Sunday 27 March | 11.00 am | Mothering Sunday service |
| Every Tuesday | 7.30 pm | Benefice Compline via Zoom |

We remember Margaret O'Leary whose funeral was held on 15th December

Baptism On 23rd January we welcome Alfie Banks into Christ's family

→ People who live in darkness can understand the importance of putting their light on a stand. Lacemakers who work by candlelight understand the need to share the light and magnify it to give the best light possible. In the 21st century with all the advantages of electricity and instant light at the flick of a switch it may be good for us to remember what darkness is like. It may also be good for us to remember how it feels when light floods into a dark space. As Christians we know we can let the Christ light flood into our hearts and we know we are able to shine out as lights in the world spreading Jesus' message of light wherever we go. Candlemas stands between Christmas and Easter, between birth and death and on to resurrection.

*We stand near the place of new birth.
Let us shine with the light of your love.
We turn from the crib to the cross.
Let us shine with the light of your love.
We go to carry his light.
Let us shine with the light of his love.
Thanks be to God.*

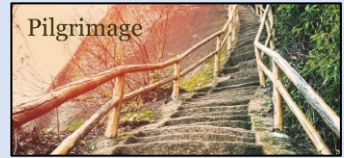


Rev'd Karen

karenmandrews5@gmail.com

01244 332028

St Chad's events



- The season of Lent begins on **Ash Wednesday** (2nd March), when we will have a service at St Chad's at 7 pm. Following on from that as we prepare for and look towards Easter, we will be meeting on Wednesday evenings at St Chad's for a **Lent Study Group**. The evenings will include a time of discussion, reflection and prayer. Please contact Rev'd Karen for more information: 07385 904172.
- **Coffee and Shop** will return to St Chad's Church on **Saturday 23rd April** which is St George's Day, from 10 am to 12 noon. Look out for posters and **please seek out your unwanted gifts, books, clothes and housewares** in March and give Louise a call on 01948 663743 if you have anything to donate – or bring it along on Friday 22nd April when we are setting up.
- There will be a **Bluebell Walk** on **Sunday 8th May** at Tushingam Hall. Put the date in your diary – more information next time.



Church Wardens

Mr P Moore Dutton: 01948 664292 / 07970 47772; peter@moore-dutton.co.uk
Mr A Dawson: 01948 820305 / 07436 072278; a_l_dawson@hotmail.com

Marbury, Tushingam and Whitewell Benefice website: www.parishmag.org

Rural ramblings... with Grandpa

(and with thanks to Mr Bill Coffin of Malpas)

Two articles which appeared in *The Chester Courant* during 1905:

The first reported a vicious attack by two men on a postman who was delivering mail around Tushingam. They knocked him off his bicycle and injured him quite badly.

The second article concerned a nasty incident when someone threw a 'missile' from a railway bridge at Tushingam which hit an engine driver on the head. The object actually cut through the hard hat which, fortunately, he was wearing at the time. He was stunned but not badly injured. The driver of the very next train reported that a 'missile' had also been thrown at him from the same bridge!

News from Bradley Barns

What a great start to the year we have had! We are looking forward to an exciting 2022 with lots of activities ahead.

Our children in the Pre-school have been awarded Silver for the RSPB Wild Challenge Award and will achieve Gold this Spring! The children are all enjoying making bird feeders and Jayne our Forest School lead is planning to create bird boxes which we will put around our outdoor area during their woodwork sessions.



In view of Coronavirus restrictions being lifted, **we would like to offer our Forest School area to any external groups.** Please contact the office for more details.

The children are also celebrating many diverse cultural events starting with Australia Day (19th January). They are baking native dishes, creating cork hats, and will be embracing the Australian way of life for the day.

Bradley Barns Nursery have an exceptionally good relationship with Tushingham School, and we are seeking to run an after-school club there. To help make this happen **we are seeking two enthusiastic, qualified individuals to help run the after-school club. The position will be from 3–6 pm Monday to Friday, term-time only. If you are interested or know anyone who may be, please call the Nursery on 01948 838321.**



Willow tunnel at Bradley Barns

As the Nursery is now at capacity, we have employed a further two members of staff, taking our total up to 21. We view this as a very positive thing for the local community, however we are always mindful of increased traffic movements and continually remind all of our parents in our monthly newsletters to be aware of their speed on Bradley Lane.

Matt Hollins

Director, Bradley Barns Nursery
bradleybarnsnursery.co.uk

01948 838321





Tushingham Primary School has started the new year with great enthusiasm, following on from some wonderful Christmas celebrations at the end of last term. Although they were unable to share any events with parents in person, the children enjoyed their annual Talent Show (featuring everything from music and dancing to magic and hula hooping!), Nativity play, Christmas dinner with party hats, Christmas crafts, parties and memorable moments galore. The whole school also joined in with a festive performance from the Edsential musicians – a cello, tuba, cornet and a trumpet – and then raised money for *Save the Children* by looking spectacular on Christmas jumper day! The term ended with a very special visit to St Chad's, for a service of thoughtful reflection led and performed by the children themselves.

Moving ahead into the New Year, everyone is looking forward to the return to sports practices and competitions. In addition, Classes 3 and 4 are excited to be working again with professional dancer Chloë Hewitt in preparation for the 'Gotta Dance' showcase event in Crewe in March. The scientists will be busy too, preparing projects to present at the Science Fair to be held at Bishop Heber School, also in March.

Keeping things both mindful and positive, a *Party Dress Day* is planned for the end of January, when the children are being asked to come to school in their most colourful clothes. The event is to encourage donations for *The Good Grief Trust* in memory of much-loved friend and school mum, Helen Probin, who passed away last year. Please see the page opposite for more information about 'The Good Grief Trust', and details of how to donate.

Class 4 learning to play brass instruments in their music lesson



*Class 2 find evidence of dragons!
They then made inferences and asked questions about what they had found*

Tushingham Toddlers

Tushingham Primary School, Tuesdays 9.30–11.30 am, during term time.

Join us for activities, songs, stories, crafts and snacks.

Parents/Carers all welcome. £2 entry (50p per additional child).



News from ‘Friends of Tushingham’

Despite us sadly having to cancel our Christmas Fair once again, our Christmas raffle went ahead remotely via Facebook Live, and we’re delighted to let you know that it raised an incredible £968!

A huge thank you to everyone who bought and sold raffle tickets, and to those who helped source and donated raffle prizes. We really couldn’t do this without all of your help. These are vital funds that support the education and development of all of the children who attend our school, and this academic year our fundraising efforts will go towards enhancing our outdoor facilities to benefit all of the children.

Special thanks to the many local companies for their generous support in donating prizes, which was much appreciated.

Later in the new year we’ll share plans for fundraising events for the Spring/Summer term, including plans for a mini Spring Fair, so all of the kind Christmas donations of chocolates and bottles will not go to waste.

Gemma Copping

Chair, Friends of Tushingham



The Good Grief Trust

The Good Grief Trust exists to help all those affected by grief in the UK. Our vision is to help those bereaved from day one, acknowledge their grief and provide reassurance, a virtual hand of friendship and ongoing support.

We bring bereavement services together, to ensure that everyone receives the tailored support they need to move forward with their lives.

You can visit our website at www.thegoodgrieftrust.org, or contact us via e-mail (hello@thegoodgrieftrust.org) or Facebook (@thegoodgrieftrust).

Please help us raise funds with a donation to our online fundraising page: www.gofundme.com/f/the-good-grief-trust-umbrella-bereavement-charity

Sporting Times...

The **Maesfen Charity Cup** was a big event in our area in the 1920s and 30s. It was described by a local footballer as 'the greatest fun I had as a player', and rivalry was said to be keen with the villages turning out in force to cheer on their side. These recently unearthed articles from the Chester Observer give further insight.

THE MAESFEN CHARITY CUP, 14th May 1932

The great fight for the possession of the trophy known as the Maesfen Charity Cup was concluded last Friday night at Maesfen. The holders of the cup are Manor House Utd, Malpas Reserves challenging their possession of it. The game was typical of good cup tie play and when time was called the teams had three goals each. Extra time was allowed and after further exciting play the holders added a further goal and retained the trophy. The Hon AR Parker thanked Mr D Adams and Mr T Mercer for the sustained interest they had taken in the event year after year... and he asked them to accept a silver inkstand as a gift from himself. (Loud cheers.) The cup was then presented to Mr M Done, and medals presented to the various players. The competition for a tea service was won by Mr Cartwright and the match ball by Mr Merrick. The financial results are a net yield of £50, and this it has been decided to allocate to Chester Royal Infirmary, Whitchurch Cottage Hospital and Royal Alexandra Hospital, Rhyl. Since the start of the competition in 1923, the sum of £282 8s has been paid over to various charities. The farming community have taken much interest, releasing their men for the matches early. The committee are the Rev the Hon AR Parker (President), Mr G Hutchinson (Chairman), Mr A Blake (vice-Chairman), Mr D Adams (Treasurer), Mr T Mercer (Secretary), and Messrs T Lockett, N Wycherley and J Probin.

MAESFEN CHARITY CUP FINAL, 9th May 1936

The 14th final on Friday at Maesfen between Manor House and No Man's Heath will rank as one of the best in the history of the competition. The defence on both sides was exceptionally good. They had scored one each when time arrived. An extra 20 minutes was allowed, and in the last 2 minutes Manor House scored twice and so won the cup. Before handing the cup to Mr S Done, the Rev the Hon AR Parker thanked those who generously placed their fields at the disposal of the committee, especially Mr Blake who had lent two fields. It had been a great game and he thought the Manor House team must have trained on Done's certified milk, enabling them to stay the course. (Laughter and cheers.) Mrs ES Wright presented each player with a miniature of the trophy in place of the usual medal, which had been specially designed and supplied by Mr Cecil Dutton.